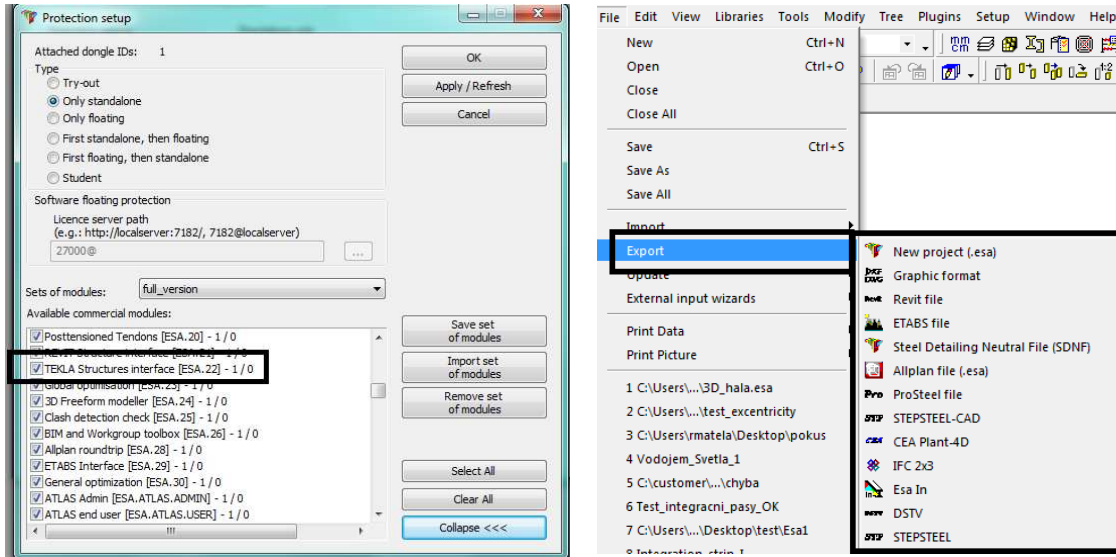


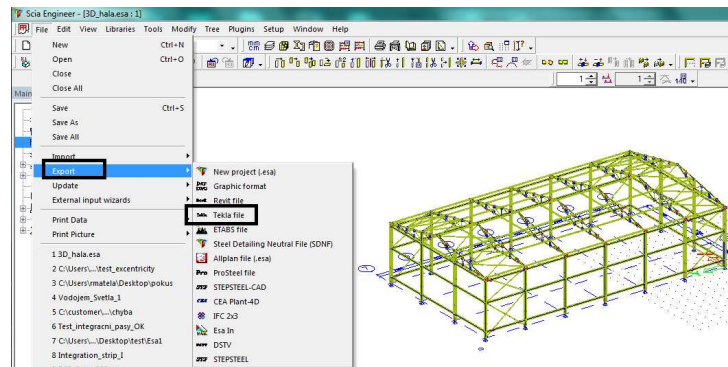
Export from Scia Engineer to TEKLA Structures

You must have bought and switched on module esa.22 (TEKLA structure interface) for export. Otherwise the program does not offer the export.

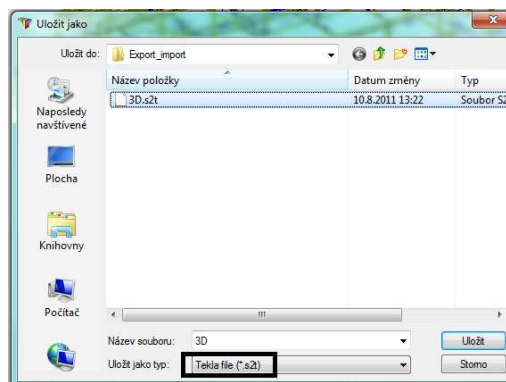


Method for export:

- 1) Open **esa** file in **Scia Engineer** and move ahead according to the picture below.

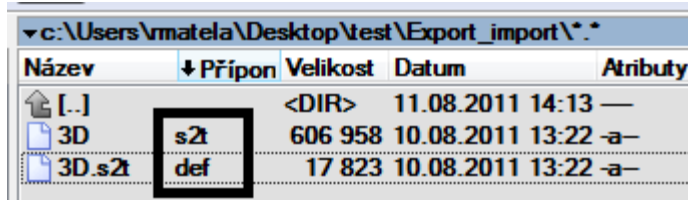


- 2) Save as file for export as **s2t**.



Notes:

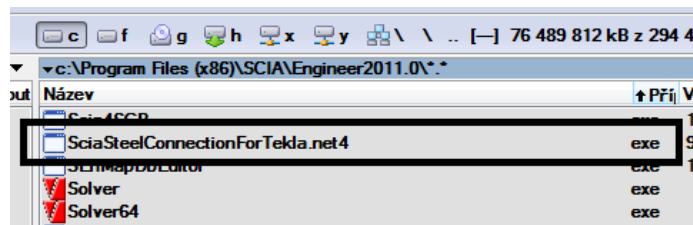
- a) **s2t** - It means Scia to Tekla.
- b) The program makes with file **s2t** also file **def**. These files must be always in the same folder before export.



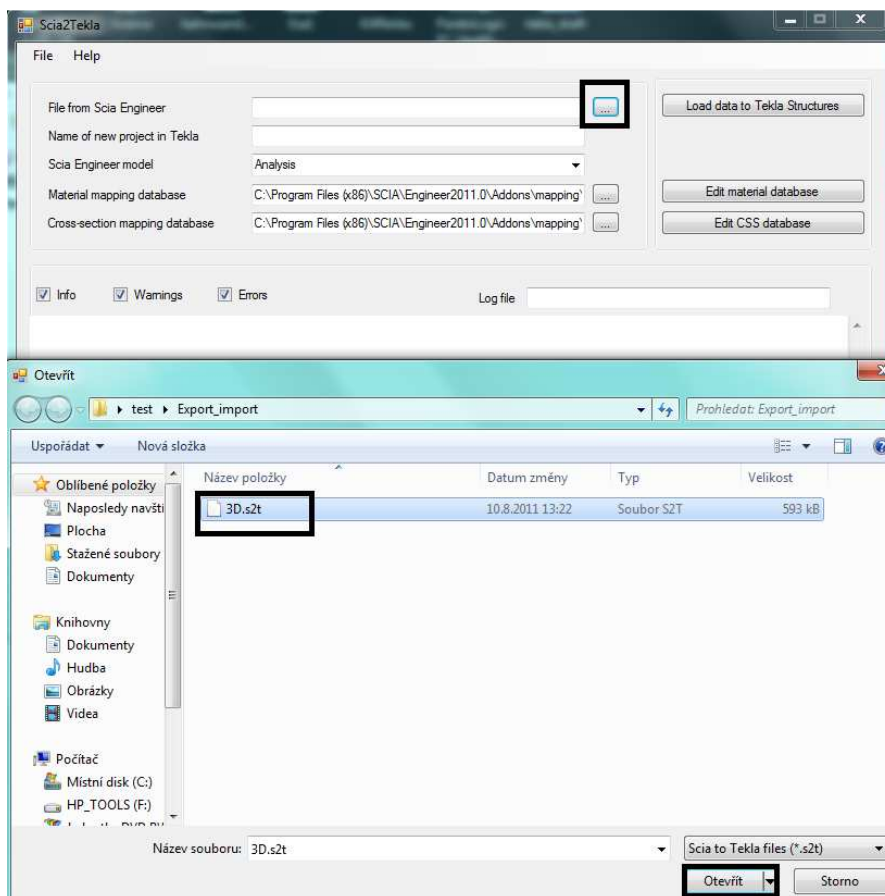
Název	Přípon	Velikost	Datum	Atributy
[.]		<DIR>	11.08.2011 14:13	—
3D	s2t	606 958	10.08.2011 13:22	-a-
3D.s2t	def	17 823	10.08.2011 13:22	-a-

- 3) Run the file **Scia2Tekla_17.0.net4.exe**. Default patch to this file is in c:\Program Files (x86)\SCIA\Engineer2011.0

This file is a part of installation of **Scia Engineer**.

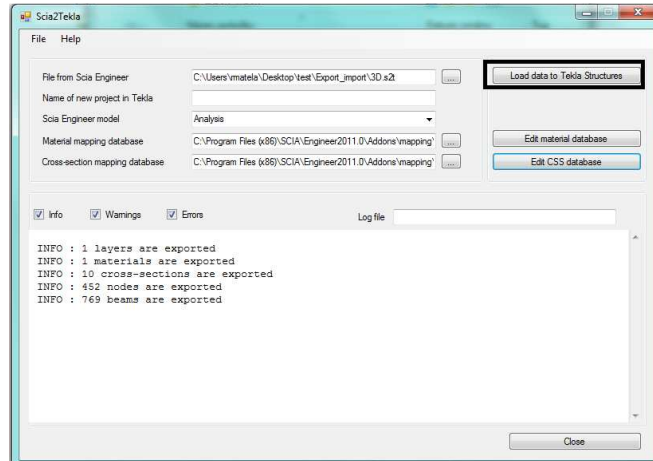


- 4) Choose file **s2t**, which was saved before. Open it.

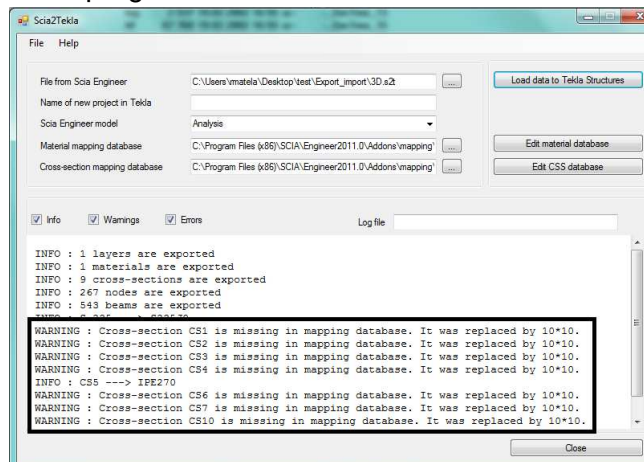


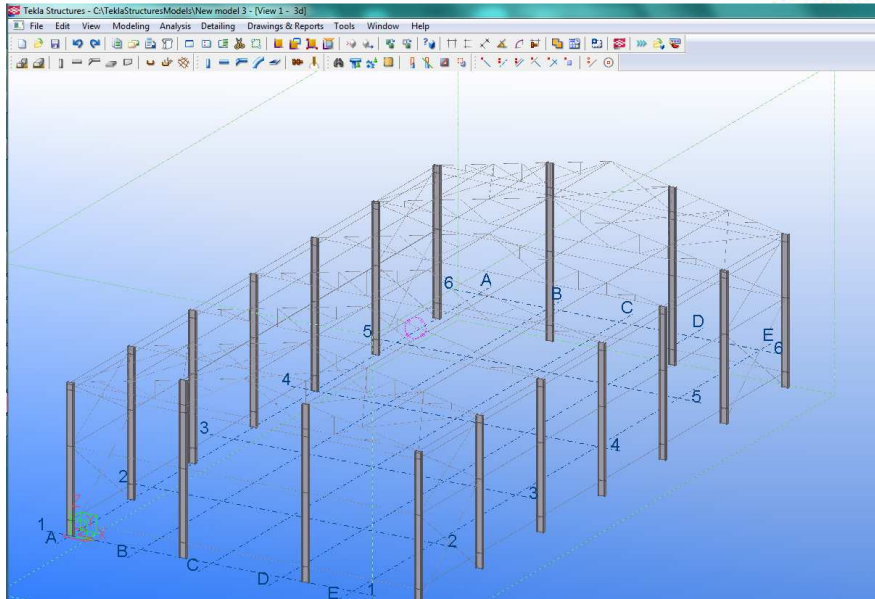
The program displays details about processed file.

- 5) Before clicking on the button **Load data to Tekla Structures**. You must keep the following conditions.
 - a) **Tekla Structures** must be switched on.
 - b) In program **Tekla Structures** some file must be opened. The file can be empty.



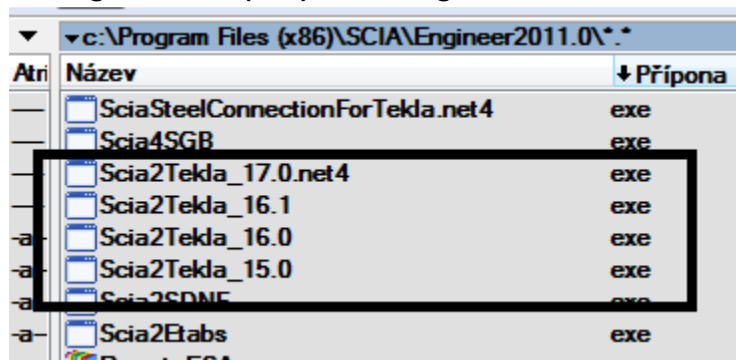
- 6) After clicking on button **Load data to Tekla Structures** a warning about processed data is displayed. In program **Tekla Structures** our structure is displayed.





Notes:

- File **Scia2Tekla_17.0.net4.exe** supports 32-bit and 64-bit version of TEKLA Structures.
- When you need an export to older version of TEKLA Structures you have to use older version of Scia2Tekla file, more on the picture below. Default patch to these files:
c:\Program Files (x86)\SCIA\Engineer2011.0



- My colleague needs to open the file s2t and import structure to TEKLA Structures but he has no licence for Scia Engineer. It does not matter for this example. He must install Scia Engineer anyway, even without protection, and proceed according to point 3).